



SACRE NEWSLETTER

SPRING 2018

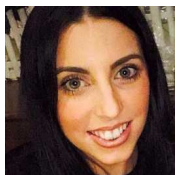
Needing Help?

Finding the Agreed Syllabus a challenge? Not sure how to assess in RE? Needing to increase subject knowledge of a specific religion? Wanting to raise the profile of RE in your school? Committed to developing the effectiveness of the subject leader for Religious Education?

There are now RE Associate Consultants on hand to help!



Joanne Harris is an experienced teacher of RE and Head of Department at Broughton High School. She has been a co-opted member of Lancashire SACRE for several years, representing secondary teachers, and was involved with the revision of the Lancashire Agreed Syllabus for 2016. She is an active NATRE member.



Nicola McDermott is Head of Religious Studies, PSHE, Citizenship and Community Studies at Penwortham Girls' High School. She has experience in developing secure systems to assess religious education and is committed to ensuring that quality RE is commonplace for all pupils, in all key stages, across the county.



Sonia Brooks is an experienced teacher of RE and Humanities at Marsden Heights Community College. She is an experienced examiner, has been a member of the Lancashire network group for many years and was involved with creating exemplar material for the revision of the 2016 Lancashire Agreed Syllabus.

Our consultants can offer 1:1 support for individual teachers and school based INSET in addition to running marketed courses. Normal consultancy rates apply.

To make an enquiry please contact: advisory.support@lancashire.gov.uk

Holocaust Memorial Day

Holocaust Memorial Day (HMD) (27 January) is a national commemoration day in the United Kingdom dedicated to the remembrance of those who suffered in The **Holocaust**. The chosen date is the anniversary of the liberation of [Auschwitz concentration camp](#) by the [Soviet Union](#) in 1945.

On Monday 11th December Holocaust Survivor Joanne Millan visited Penwortham Girls High School. She spoke to the whole of year 9 about her experiences during the Holocaust – it was a very moving experience for everyone and the pupils appreciated the time she took to travel from London.

<http://hmd.org.uk/>



Do you want your pupils to:

- Foster understanding of Identity, Diversity, Community, Equality
- Support Spiritual, Moral, Social and Cultural development of pupils
- Promote achievement
- Develop social skills
- Increase respect for others, self-confidence, self-efficacy
- Increase knowledge and understanding of complex issues and willingness to voice opinions and listen to others

Then join the Faith Centre School Linking Programme!
For further information email:

afraisab.anwar@lancashire.gov.uk

British Values audit

How does your School promote Fundamental British Values?

How prepared are your pupils for life in modern and diverse Britain?

Does your school demonstrate the values through the life and ethos of the school?

What are the strengths and /or areas for development around this duty for your school?

To carry out a self-review contact the Faith Centre:

afraasiab.anwar@lancashire.gov.uk / Tel: 01282 682275

REQM

- Are you proud of the RE provision in your school? Do you want it to be recognised?
- Do learners in your school have high quality RE?
- How does RE contribute to whole school improvement?
- Do you need to self-evaluate the quality of RE teaching in your school?

Take a look at the materials on:

<http://reqm.org/>

Farmington Scholarships

Applications for the 2018/19 Farmington Scholarships are now open. These are Scholarships available to teachers of religious education and associated subjects in UK secondary, primary, and special needs schools. Head teachers who wish to undertake research into either religious education or values education are also eligible to apply.

Scholarships cover the cost of tuition, essential local travel and, by negotiation with the school, the salary of a replacement teacher up to point 6 of the main pay scale. Scholarships last for a maximum of 30 days and can either be taken at a local university (we have links with 15 throughout England, Scotland, Wales and Northern Ireland) or can be home-based with a local tutor

<http://www.farmington.ac.uk/index.php/farmington-scholarships/>

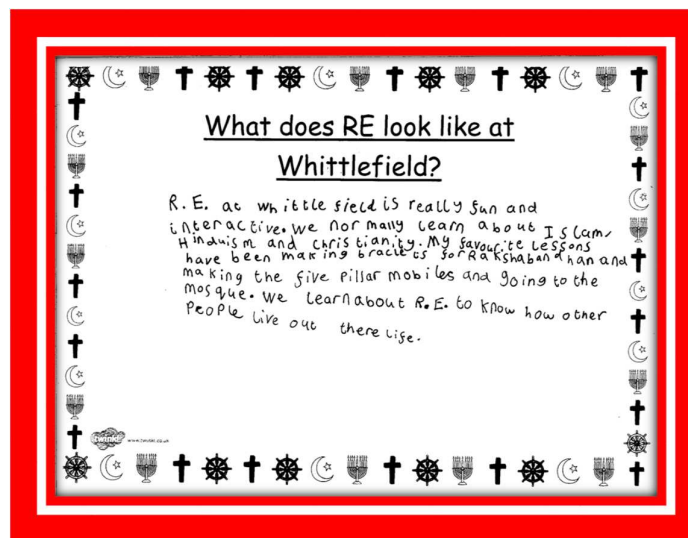
Spotlight on RE around the county

Whittlefield Community Primary School, Burnley

County Councilor Sobia Malik and John Wilson, members of SACRE, visited Whittlefield Primary School in Burnley in order to find out about the importance of RE in the school. RE plays an essential part in ensuring that Whittlefield is at the heart of its community by providing children with knowledge and understanding of the religious communities in Burnley. Pupils have visited local churches and mosques and talked with representatives of different religions. This has given them perceptive insights into religious beliefs, values and practices. Their deep thoughts and unbridled enthusiasm conveyed the impact of creativity at the heart of teaching and learning. The headteacher, Helen Kershaw, praised the work of Amy Hartley, who teaches most of the RE. Amy has taken advantage of the training courses and conferences organized by Lancashire, especially since the launch of the revised syllabus. It was good for the visitors to observe how children are benefiting from recent developments at both County and school levels.



Mark Noonan -Year 6, Freddie Whitfield - Year 4, Maisy Connolly-Lovat - Year 4, Khia Doe - Year 3,
Amy Hartley - Higher Level Teaching Assistant and Helen Kershaw (headteacher) SACRE representatives
John Wilson and Cllr Sobia Malik.





The **BIG RE NEWS** is the publication of the **Commission on Religious Education's Interim Report 'Religious Education for All'**

The commissioners have made recommendations relating to 4 areas:

- *A National Entitlement to Religious Education*
- *How to hold schools to account for the provision and quality of Religious Education.*
- *A national plan to improve the teaching of Religious Education*
- *How to renew and expand the role of the Standing Advisory Council on Religious Education (SACRE)*

Definitely worth a read.

<http://www.commissiononre.org.uk/religious-education-for-all-commission-interim-report/>



You may also have seen the REC/NATRE '**State of the Nation' RE Report** published earlier in September, which paints a worrying picture of the current state of Religious Education in England.

Are you fulfilling your statutory duties in relation to the teaching of Religious Education?

"RE knowledge is vital in ensuring all school leavers go into the world of work and beyond, understanding the differences, identifying distortions and being part of the broader change needed to ensure communities are cohesive and well-integrated for future generations."

<https://www.natre.org.uk/news/latest-news/800-000-secondary-pupils-lose-out-on-religious-literacy/>

The Westhill Awards

The Westhill/NASACRE Awards encourage schools to engage with diversity through projects which will generate compelling learning experiences in RE for young people, relevant to today's context. Each year grants of up to £4,000 have been awarded to support suitable projects submitted by schools through their SACREs. The Awards develop creative engagement among young people and build up a bank of ideas and good practice for others to use in their own ventures, to the benefit of their locality and society more generally.

For information on how to apply and to see successful past awards see:

<http://www.nasacre.org.uk/westhill-nasacre-awards>

Pupil Voice

Year 8 Gifted and Talented RE day

80 year 8 students from a range of Lancashire schools attended a pupil conference on the theme of 'Good and Evil; Hope and Despair'. The event was kindly hosted by Penwortham Girls' High School and led by Lat Blaylock of RE Today. In the morning, students worked in mixed groups thinking about some of the questions raised by this topic, considering a range of religious and philosophical responses and discussing their own personal beliefs and values. In the afternoon they moved on to creating an art project in response to one of the themes. There were some great ideas from the young people, demonstrating the importance of giving students opportunities to think and talk about life's big questions.

Schools involved were: Ashton Community Science College, Broughton High School, Carnforth High School, Marsden Heights Community College, Penwortham Girls' High School, Rhyddings Business and Enterprise School and Unity College Burnley.

Thanks to all the teachers and students involved.



Useful Websites

Have a look at some of these websites, they're full of useful information and exciting ideas. Why not pass them on to your colleagues?

www.retoday.org.uk

www.natre.org.uk

www.reonline.org.uk

<http://pof.reonline.org.uk>

<http://www.bbc.co.uk/education>

<http://www.cleo.net.uk/index.php>

Lancashire SACREs Annual Report can be accessed via the RE website. Follow this link:

http://www.lancsngfl.ac.uk/curriculum/re/index.php?category_id=79

We are listening.....

As the result of the RE Consultation our RE Consultants are currently planning courses on:

RE assessment – 'securing judgements within each religion'

Teaching Islam through the Field of Enquiry.

Watch the LPDS site for details.

NATRE affiliated local group

The Central Lancs network (secondary) meet 4 times a year to support one another and share ideas and resources. Our meetings are relaxed and friendly - newcomers are always welcome. We usually meet in schools, but occasionally at places of worship. Some meetings have a specific focus such as GCSE or assessment, others are run 'Teachmeet' style with everyone bringing along a resource to share.

If you would like to be added to my mailing list and receive information about these meetings, please let me know: email

harrisj@broughtonhigh.co.uk
or @JoanneH_RE on twitter

See here for more information about NATRE affiliated local groups

<https://www.natre.org.uk/about>

Religious Education and Parent Power

Many leaders and teachers will encounter parents wishing to withdraw their children from assemblies and RE lessons for religious reasons. A short survey aims to understand this process, and how it is handled by schools across the country. It is hoped that the data will inform the RE Council Commission's report and policy recommendations.

To complete the survey, please go to:

www.hope.ac.uk/resurvey

Have you seen.....

My Life My Religion

An animated A to Z guide for pupils aged 11-14 that explores and introduces a variety of religious topics. Alongside each film, there is more information about the content and suggestions of how it could be used in the classroom.

<http://www.bbc.co.uk/programmes/b05pc1c9/clips>

A to Z of Religion and Beliefs

An animated A to Z guide for pupils aged 11-14 that explores and introduces a variety of religious topics. Alongside each film, there is more information about the content and suggestions of how it could be used in the classroom.

<http://www.bbc.co.uk/programmes/articles/3IKZp31jBVJ2v3C2h1V03kz/a-to-z-of-religion-and-beliefs>

Future training opportunities now live on LPDS.

LAT Blaylock supported by our RE consultants is running a series of 4 courses.

"Better RE in Lancashire: Training for teachers and subject leaders"

Lancashire SACRE wants to provide opportunities for teachers of RE in all our primary schools to:

- Understand the characteristics of good quality teaching, learning and assessment in RE for pupils aged 4-11
- Experience the inspiration, depth and potential of RE through diverse learning methods and examples from many different religions and beliefs
- Enable pupils aged 4-11 to enjoy and learn through links between RE and the expressive arts
- Use the Agreed Syllabus effectively to set high standards and achieve good outcomes for all

Day 1: Better RE: planning for effective lessons Pedagogy in action

Day 2: Methods to make RE exciting for pupils and teachers

Day 3: Assessment in RE

Day 4: Pupil conference for Year 5

Please see course references **REL 304, REL305, REL306 and REL307**

In January, around 20 secondary teachers of RE from across Lancashire attended an afternoon with Lat Blaylock looking at ideas for teaching the 1-9 Religious Studies GCSE. The course was a great success and left all involved feeling more confident in their subject knowledge and inspired to tackle the challenges of the new specifications. Feedback from those who attended was very positive, describing the day as "really useful and purposeful", "absolutely brilliant" and "amazing - made me really think about how I am currently teaching and what I need to do differently". The best feedback though was from an NQT who not only said how helpful the course had been, but also how good it had been to get together with a group of supportive and welcoming colleagues from across the county.



If you are doing something exciting in RE or would like to share your approach to delivering the syllabus please contact: advisory.support@lancashire.gov.uk

Alternatively send your photos and short text to: @LancsSACRE